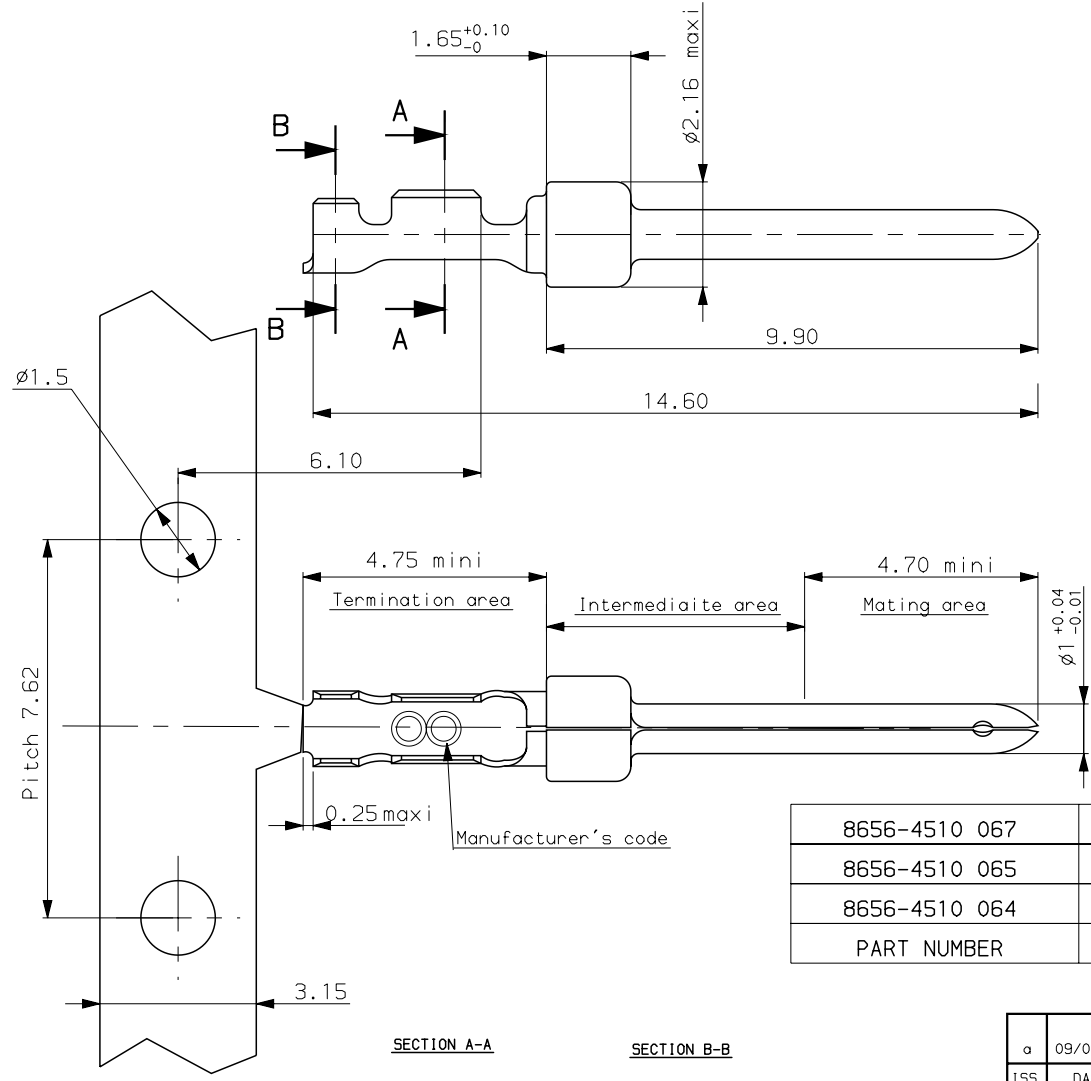


H G F E D C B A

4
3
2
1



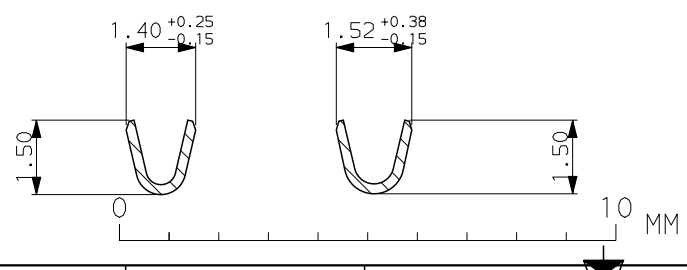
NOTES

1. Material: brass, thickness 0.20
2. Finish : see table.
3. Wire range: #24 to #28AWG
4. Max. outer diameter of insulated wire: 1.02mm
5. Current carrying capacity of individual contacts:
 - 3.0Amps max. when crimped to #24AWG
 - 2.0Amps max. when crimped to #26AWG
 - 1.5Amps max. when crimped to #28AWG
6. After 5 insertions into male connector, contact must be retained in housing when subjected to a 5 pound axial pull
7. When contact is crimped to #24AWG, the insulation support crimp height must be 1.78mm max. to ensure proper insertion into housing
8. Packaging : See drawing C01-8656-0522

8656-4510 067	1μNi+2μ SnPb Min	1μNi Mini	2μNi+0.40μ Au Min
8656-4510 065	1μNi+2μ SnPb Min	1μNi Mini	3μNi+0.75μ Au Min
8656-4510 064	1μNi+2μ SnPb Min	1μNi Mini	2μNi+Flash Au
PART NUMBER	Termination area	Intermediate area	Mating area

SECTION A-A

SECTION B-B



a	09/05/00	Creation of drawing	--
ISS	DATE	Latest modification by : BOUTTIER	MOD N°
Designed by: BOUTTIER date 09/05/00			Type of drawing: CLIENT
TITLE : PIN CONTACT #24 TO #28 AWG (removable crimp contact.)			SHEET 1/1
SCALE: 10	FRAMATOME CONNECTORS FRANCE Rue Louis Breguet - BP 05 72024 LE MANS Cedex Tel. 33 (16) 43.84.08.43		This document is the property of FRAMATOME CONNECTORS FRANCE It must not be reproduced or communicated without permission in writing from the owners
FORMAT A3	SOURIAU DRG N° C01-8656-0428		PROJECT M94D001